



£212,500
Willes Road

Leamington Spa, CV32 4PY

PROPERTY SUMMARY

This delightful and stylish Regency first-floor apartment is a superb one-bedroom home, beautifully light-filled and rich in period character.

One of just four apartments within this handsome Grade II listed former Regency townhouse, the property occupies an enviable position only a short stroll from the north town centre of Royal Leamington Spa. The town is renowned for its elegant architecture, vibrant café culture and abundance of independent eateries, boutiques and bars, as well as its stunning parks and green spaces including Jephson Gardens and the River Leam. Leamington Spa offers a wonderful balance of charm and convenience, combining a lively social scene with a relaxed, green atmosphere — making it an outstanding place to live, work and unwind.

For commuters and weekend travellers alike, Leamington Spa benefits from excellent rail links to London Marylebone, with direct

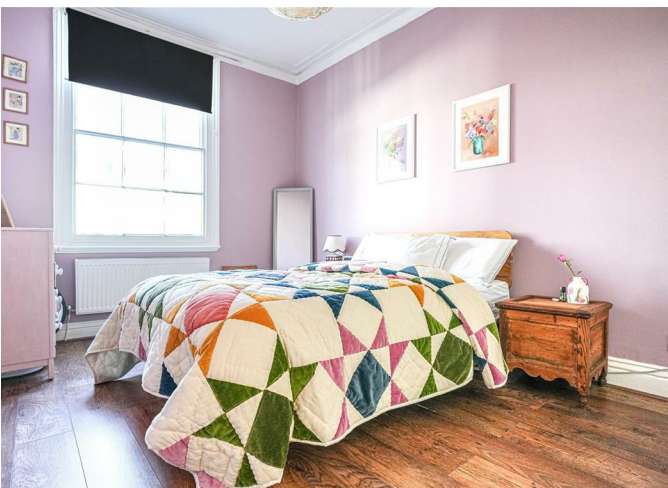
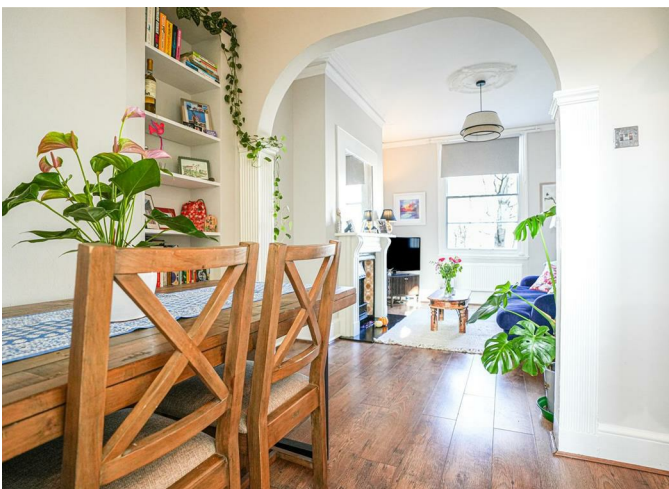
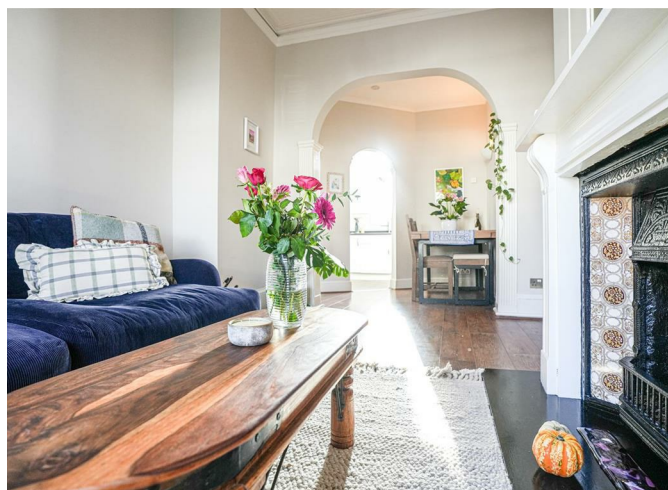
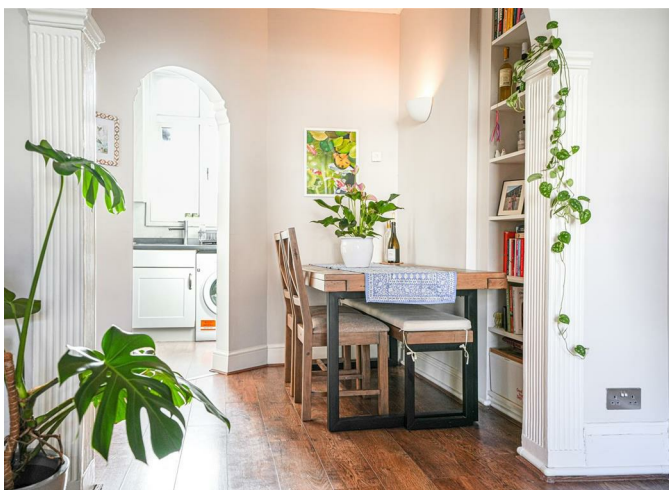
1



1



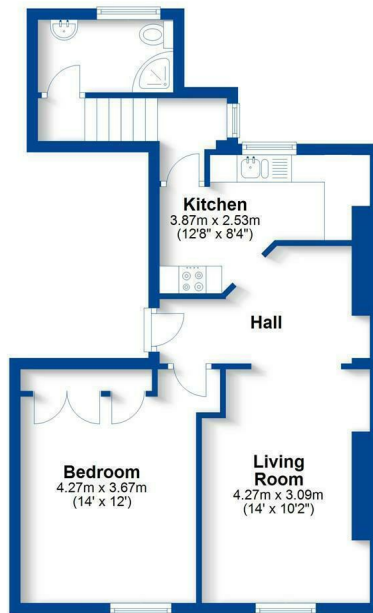
1





First Floor

Approx. 49.1 sq. metres (528.8 sq. feet)



Total area: approx. 49.1 sq. metres (528.8 sq. feet)

This plan is for illustration purposes only and should not be relied upon as a statement of fact.



Energy Efficiency Rating		
	Current	Potential
<i>Very energy efficient - lower running costs</i>		
(92 plus) A		
(81-91) B		
(69-80) C		
(55-68) D		
(39-54) E		
(21-38) F		
(1-20) G		
<i>Not energy efficient - higher running costs</i>		
England & Wales	EU Directive 2002/91/EC	

Agents Note: Whilst every care has been taken to prepare these particulars, they are for guidance purposes only. All measurements are approximate and are for general guidance purposes only and whilst every care has been taken to ensure their accuracy, they should not be relied upon and potential buyers/tenants are advised to recheck the measurements



OFFICE ADDRESS
8a Regent Street
Leamington Spa
Warwickshire
CV32 5HO

OFFICE DETAILS
01926 354 400
leamington@handlesproperty.co.uk